



Slim Line 22" Cubers and Storage Bins

ITEM NO.

SLE300, SLE400 *Air, Water and Remote Cooled*

C.S.I. File No. 11400



SLE300 on a SLB375 Bin

These ice machine models represent Scotsman's commitment to R-404A Refrigerant (DuPont SUVA® HP62) as the sensible, permanent solution to the refrigerant issue.

Now you can put ice where you never could before because of limited floor space. At the same time, you can gain all the benefits and service support of Scotsman.

VOLUME PRODUCTION IN A 22" WIDE CABINET

- SLE300 produces up to 290 lbs. of ice in 24 hours.
- SLE400 produces up to 400 lbs. of ice in 24 hours.
- Produces crystal clear cube ice for better drink quality. Fills glass easier.

PRODUCT FEATURES

- For added capacity, ice machines are stackable.
- Field tested, proven reliability.
- Cubes are made on both sides of the evaporator plate.
- Stainless steel exterior cabinet ensures corrosion resistance and longer life.

EASY TO SERVICE

- Convenient front access for cleaning, maintenance and adjustments.
- All electrical and plumbing hook-ups are external on rear panel.

QUALITY ASSURANCE

- Start-up of every Slim Line Cuber is conducted before shipping, to insure that all mechanical systems perform properly.

NO CFCS- ENVIRONMENTALLY RESPONSIBLE

- HFC R-404A (DuPont SUVA® HP62) refrigerant - zero ozone depletion potential.

WARRANTY - SATISFACTION

See your dealer for complete warranty details.

Cubers

- 3 years parts and labor on all components.
- 5 years parts and labor on evaporator.
- 5 years parts on compressor and condenser.

Bins

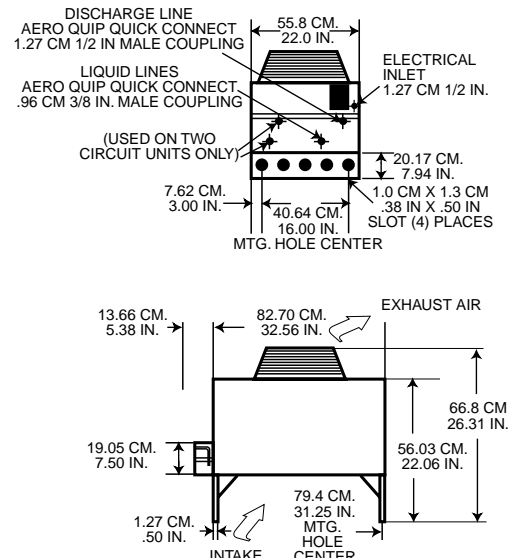
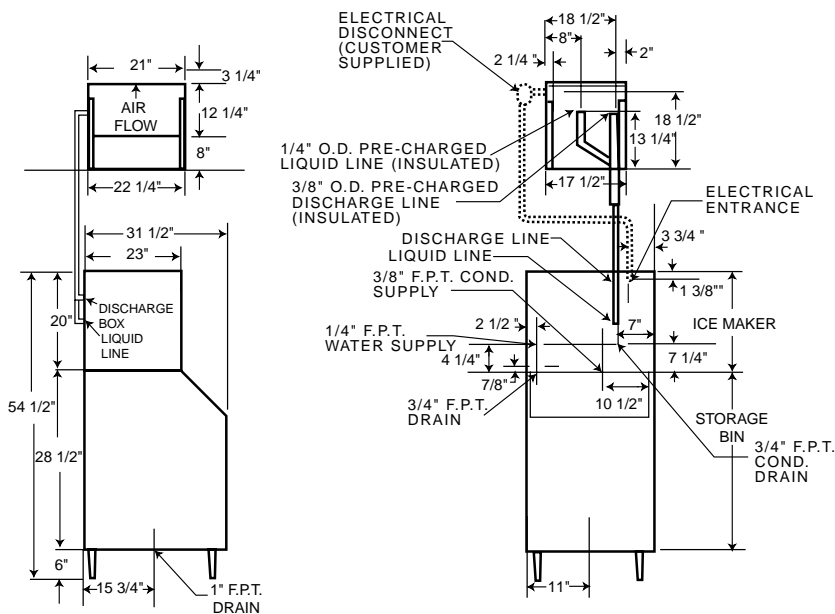
- 3 years parts and labor.

This product qualifies for the following listings:



SCOTSMAN®
Ice Systems The World Relies On.™

Consultant/Contractor Approval



INSTALLATION NOTE: Air cooled models require 6" space on right for air intake. Air flow: In right side, out the back.

All models: Dimensions: W x D x H Unit: 22" x 23" x 20" Shipping Carton: 26" x 26" x 26"

Model	Cond. Unit	Ice Prod. Lbs./24 Hrs 70°/50°	Finish*	Basic Electrical Volts/Hz/Phase	Max. Fuse Size or HACR Circuit Breaker	Comp HP	Circuit Wires	Min. Circuit Ampacity†	Shipping Weight lbs./kg.	Ice Prod. Lbs./24 Hrs 90°/70°	Power** Consumption KWH/100 lbs.	Water Usage** Gallons/100 lbs. Potable	Condenser
SLE300AS-1A	Air	290	SS	115/60/1	20	3/4	2	17.3	155/70	222	11.1	13.9	-
SLE300WS-1A	Water	260	SS	115/60/1	20	3/4	2	15.8	155/70	213	10.1	13.9	131
SLE400AS-1A	Air	400	SS	115/60/1	25	3/4	2	22.3	165/74	350	9.3	14.0	-
SLE400WS-1A	Water	400	SS	115/60/1	20	3/4	2	18.0	165/74	366	7.8	13.7	133
SLE400RS-32A	R-Air	360	SS	208-230/60/1	20	3/4	2	16.5	165/74	327	9.1	12.7	-

* SS=Stainless Steel ** At 90° air, 70° water temperature † Use this value to determine minimum wire size as per National Electric Code Standards. Refrigerant: R-404A

REMOTE CONDENSER FOR USE WITH:

Ice Machine Model Number	Condenser Model Number	Dimensions W"x D"x H" (Without Legs)	Condenser Unit	Finish	Basic Electrical Volts/Hz./Phase	No. of Wires	Min. Circuit Ampacity†	Max. Fuse Size	Shipping Weight lbs./kg.
SLE400RS-32A	RCE400-32A	18 1/2" x 20 3/4" x 23 3/4"	Air	Galvanized	208-230/60/1	2	16.5	20	60/27

SLB260 and SLB375 Modular Bins-Use with SLE300 or SLE400

Model Number	(Height w/legs) Dimensions W"x D"x H"	ARI Bin Capacity	Application Capacity	Finish *	Shipping Weight lbs./kg.
SLB260S	22 x 31 1/2 x 34 1/2	200	244	SS	100/45
SLB375S	22 x 31 1/2 x 50	310	400	SS	130/59

* (SS) Stainless Steel

IMPORTANT OPERATING REQUIREMENTS:

	MINIMUM	MAXIMUM
Air Temperatures.....	50°F (14.2°C)	100°F (38°C)
Condenser Temperatures.....	-20°F (-28.9°C)	120°F (48.9°C)
Water Temperatures.....	40°F (4.4°C)	90°F (32°C)
Water Pressures	20 lbs. gauge	60 lbs. gauge
Electrical Voltage.....	-10%	+10%

Machine requires voltage indicated on rating name plate. Failures caused by improper voltage are not considered factory defects.

Scotsman's products are not designed for outdoor installations. Extended periods of operation at temperatures exceeding these limitations constitutes misuse under the terms of Scotsman Manufacturer's Limited Warranty, resulting in a loss of warranty coverage.

PRE-CHARGED REFRIGERANT TUBE KITS:

RTESL25-25 foot pre-charged with R-404A Refrigerant tubing with connectors.
RTESL40-40 foot pre-charged with R-404A Refrigerant tubing with connectors.

BIN CASTER KIT: KSLBC2 3" high caster kit (to replace 6" legs.)
Do not use casters when stacking.

SLE300 AIR-COOLED WATER TEMPERATURE

AIR TEMPERATURE	WATER TEMPERATURE				lbs. kg.
	F° C°	50° 10°	70° 21°	90° 32°	
70° 21°	290 132	255 116	235 107		
80° 27°	270 123	250 113	230 104		
90° 32°	255 116	222 102	220 100		

SLE300 WATER-COOLED WATER TEMPERATURE

AIR TEMPERATURE	WATER TEMPERATURE				lbs. kg.
	F° C°	50° 10°	70° 21°	90° 32°	
70° 21°	260 118	245 111	226 103		
80° 27°	250 113	234 106	215 98		
90° 32°	242 110	213 97	208 94		

SLE400 AIR-COOLED WATER TEMPERATURE

AIR TEMPERATURE	WATER TEMPERATURE				lbs. kg.
	F° C°	50° 10°	70° 21°	90° 32°	
70° 21°	400 181	372 169	348 158		
80° 27°	382 173	360 163	339 154		
90° 32°	363 165	321 146	295 134		

SLE400 WATER-COOLED WATER TEMPERATURE

AIR TEMPERATURE	WATER TEMPERATURE				lbs. kg.
	F° C°	50° 10°	70° 21°	90° 32°	
70° 21°	400 181	381 173	356 161		
80° 27°	387 176	372 169	351 159		
90° 32°	378 171	366 166	340 154		

SLE400 REMOTE-COOLED WATER TEMPERATURE

AIR TEMPERATURE	WATER TEMPERATURE				lbs. kg.
	F° C°	50° 10°	70° 21°	90° 32°	
70° 21°	360 163	338 153	314 142		
80° 27°	348 158	317 144	303 137		
90° 32°	337 153	327 148	295 134		